



# Planning for a Changing Minnesota

## Minnesota's Statewide Multimodal Transportation Plan

### What is the Statewide Multimodal Transportation Plan?

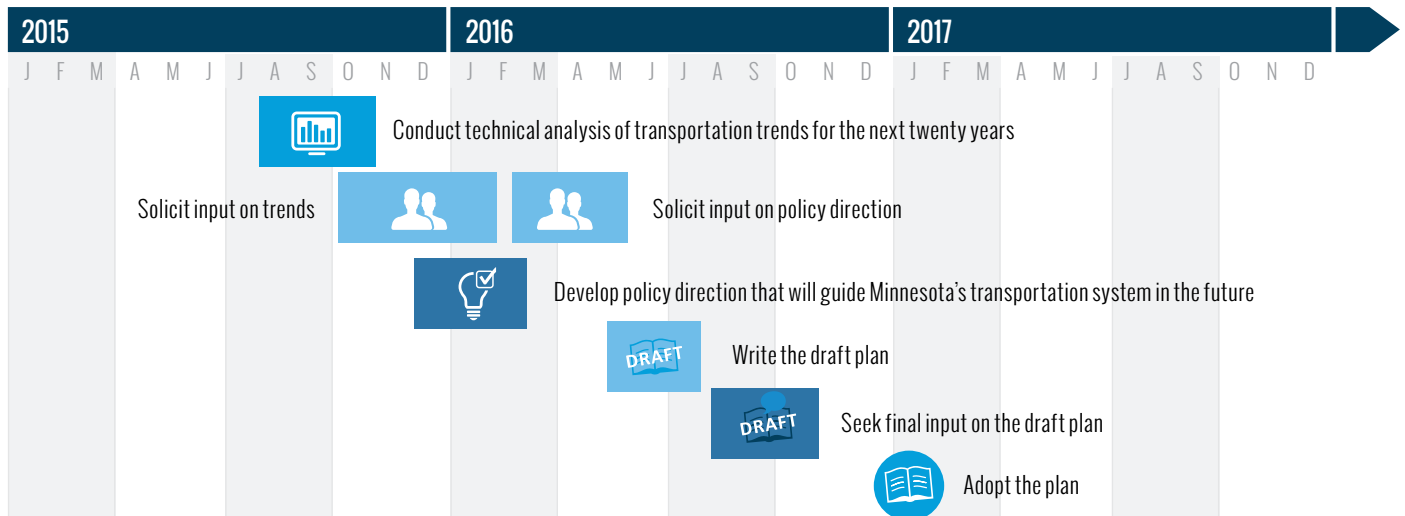
The Statewide Multimodal Transportation Plan (SMTP) is a plan dedicated to the future of Minnesota's multimodal transportation system. The plan looks at all types of transportation and what's changing. Ultimately, it provides a 20-year transportation policy framework for the state.

### How often is the SMTP updated?

MnDOT updates the SMTP every four years. The update is so important to the success of the future system that it is required under both federal and state law.



### MnDOT's SMTP Schedule



### What changes does the SMTP consider?

#### POPULATION

- Aging Population
- Demographics
- Health
- Racial Disparities & Equity
- Urban & Rural Populations

#### ECONOMY

- Aging Infrastructure
- Dynamic Road Pricing
- Economy & Employment
- Freight Rail
- New Logistics
- Public-Private Partnerships

#### ENVIRONMENT

- Climate Change
- Environmental Quality

#### TRANSPORTATION BEHAVIOR

- Mobility as a Service
- Teleworking & e-Shopping
- Transportation Behavior
- Urban & Rural Populations

#### TECHNOLOGY

- Autonomous Vehicles
- Electrification & Alternative Fuels
- Mobile Technology
- Sensors, Monitors & Big Data
- Unmanned Aircraft Systems/ Drones

### How can I be involved?

MnDOT wants to develop a SMTP truly reflective of the public's interests so we're engaging residents around the state throughout the planning process. Get involved by taking a survey, attending an event, or submitting a comment. We're interested in hearing your feedback!

### Statewide Multimodal Transportation Plan Contact:

Katie Caskey, Project Manager  
Statewide Multimodal Transportation Plan  
651.366.3901  
kathryn.caskey@state.mn.us



## Investing Wisely Minnesota's State Highway Investment Plan

### What is the Minnesota State Highway Investment Plan?

Like you, MnDOT has a budget for its expenses. MnDOT budgets revenue available for capital highway improvements through the Minnesota State Highway Investment Plan (MnSHIP). Through this planning process, MnDOT establishes how much money will be spent on things like pavement, bridges, bicycling, and walking infrastructure on the state highway network.

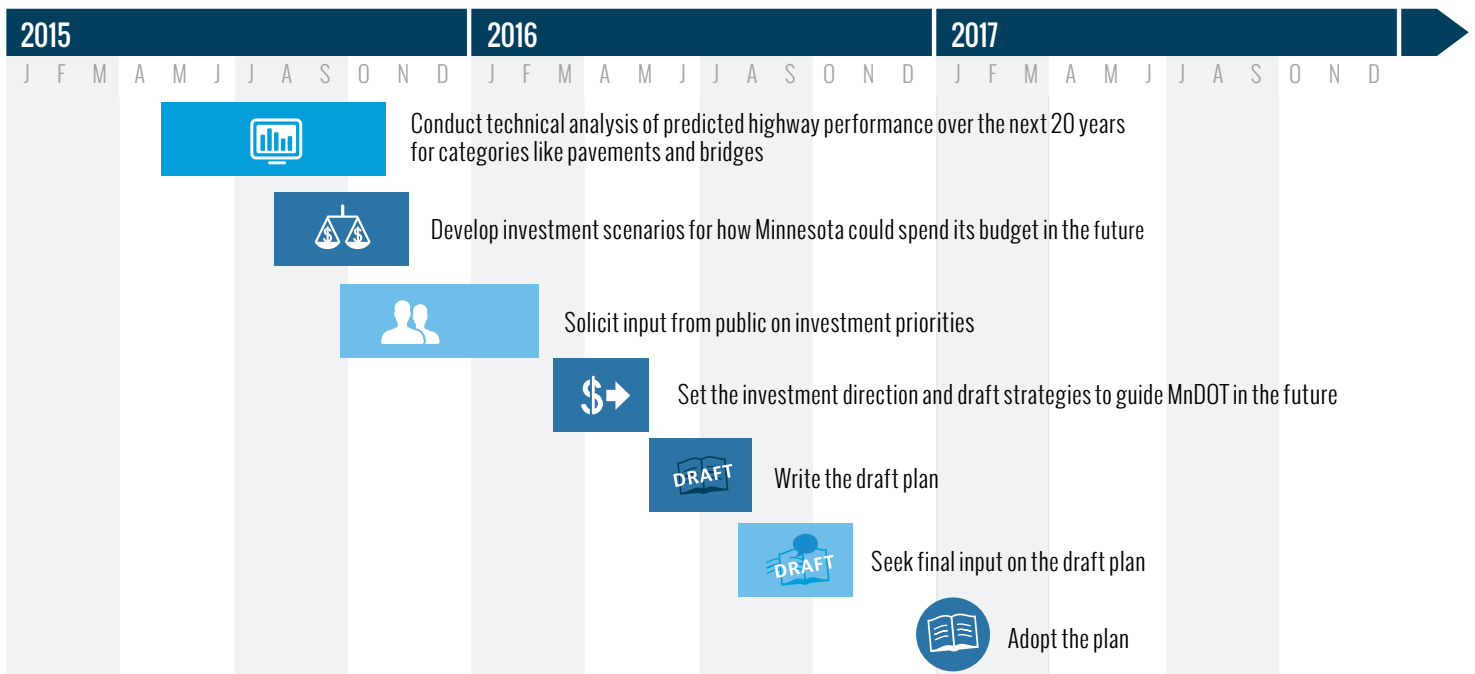
### Investment Considerations

MnDOT must balance competing priorities on our state highway system. To prioritize funding for these activities, MnDOT is guided by a number of factors including state and federal requirements, technical experts and public opinion.

### MnSHIP: At a Glance



### MnDOT's MnSHIP Schedule



### How can I be involved?

MnDOT wants to develop a MnSHIP truly reflective of the public's interests so we're engaging residents around the state throughout the planning process. Get involved by taking a survey, attending an event, or submitting a comment. We're interested in hearing your feedback!

### Minnesota State Highway Investment Plan Contact:

Josh Pearson, Project Manager  
Minnesota State Highway Investment Plan  
651.366.3773  
Joshua.pearson@state.mn.us